

Consultation Phase Resource Map

These maps were compiled as part of the consultation phase of the 'Delineating Kent Mineral Safeguarding Areas' project. They show inferred mineral resources and are based upon the British Geological Survey's (BGS) 2002 Kent, Medway and the London Boroughs of Bexley and Bromley Mineral Resources map. Geological units have been extracted from the latest BGS 1:50 000 scale digital geological map of the UK, DIGMapGB-50 version 6.20. Active mineral extraction sites are shown. Details on their location were obtained from the BGS BRITPITS database of mineral workings. The border around the onshore administrative boundary shows mineral resources up to five kilometres beyond Kent in order to allow consideration of mineral resources straddling the county boundary. Mineral resources underlying urban areas, as defined in the Ordnance Survey 1:250 000 scale Strategi topographic data, have not been shown.

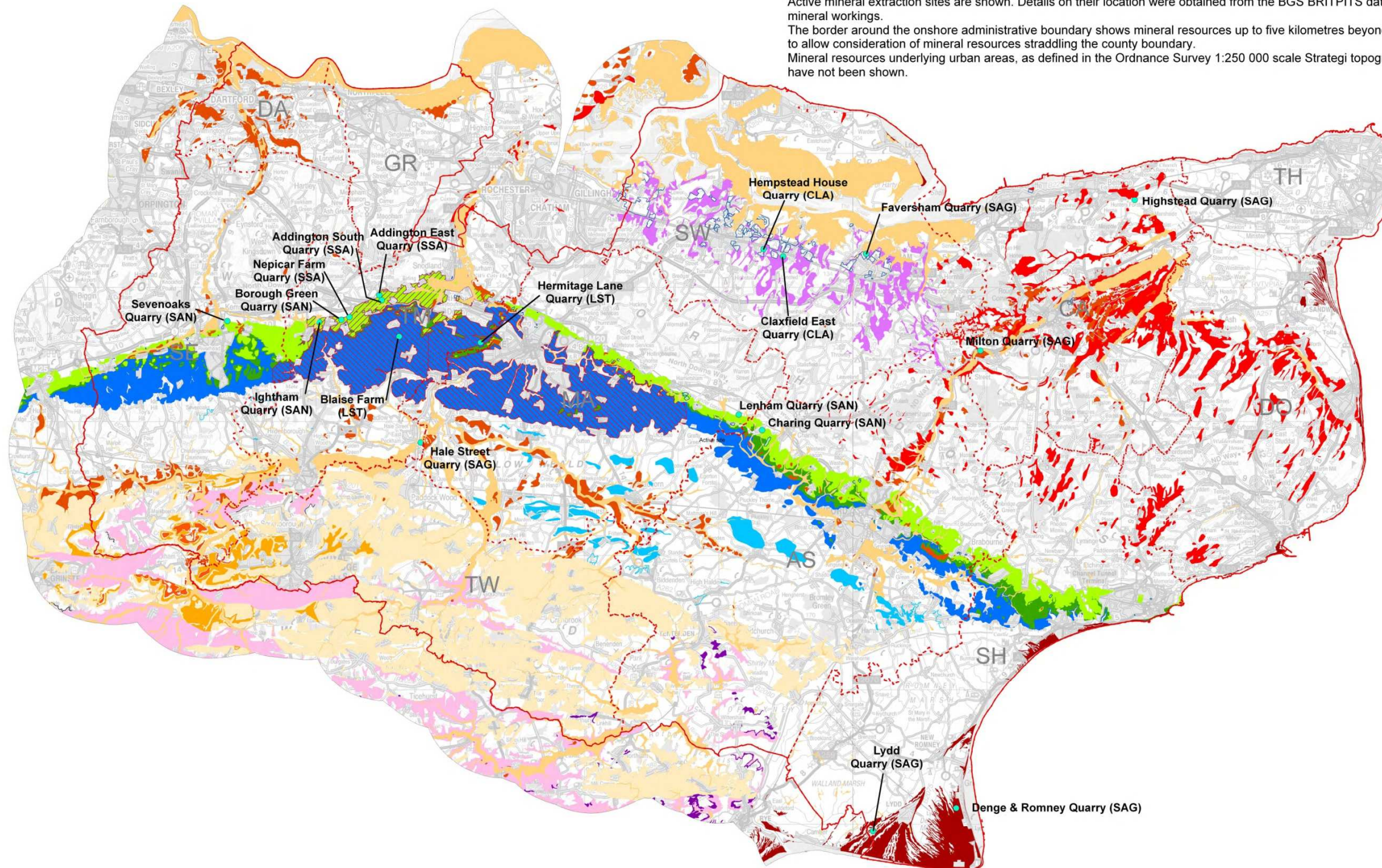
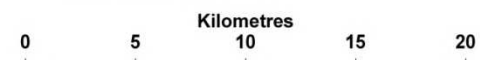


Figure 6 Bedrock sand and silica sand, superficial sand and gravel, building stone, crushed rock and brickearth



Reproduced by permission of the British Geological Survey, ©NERC. All rights reserved (2012).
The background to this map is reproduced from the OS map with the permission of The Controller of Her Majesty's Stationery Office, Crown Copyright. All Rights Reserved. Kent County Council. 100019238 (2012)
Unauthorised reproduction infringes © Crown Copyright and may lead to prosecution or Civil proceedings.

Legend

-  District boundary
-  Active site
 - Other Sand and gravel sites
-  Storm beach gravel
-  Sub-alluvial river terrace deposits
-  River terrace deposits
-  Active site
 - Other Brickearth site
-  Former Brickearth extraction sites from Kent County Council
-  Brickearth (Faversham - Sittingbourne area)
-  Other Head Brickearth
-  Active Silica sand site
 - Other Silica sand pits
-  Silica sand/Construction sand - Sandstone, Folkestone Formation
 -  Active Bedrock sand site
 - Other Bedrock sand pits
-  Former Sand extraction sites from Kent County Council
-  Construction sand - Sandstone, Folkestone Formation
 -  Active site
 - Other limestone sites
-  Limestone - Hythe Formation (Kentish Ragstone)
 -  Active site
 - Other confirmed building stone sites
-  Limestone - Calcareous Tufa
-  Sandstone - Folkestone Formation
-  Sandstone - Sandgate Formation
-  Limestone - Hythe Formation (Kentish Ragstone)
-  Limestone - Paludina Limestone, Weald Clay Formation
-  Sandstone - Tunbridge Wells Sand Formation
-  Sandstone - Cuckfield Stone Bed, Tunbridge Wells Sand Formation
-  Sandstone - Ardingly Sandstone Member, Tunbridge Wells Sand Formation
-  Ironstone - Wadhurst Clay Formation
-  Sandstone - Wadhurst Clay Formation
-  Sandstone - Ashdown Formation